

Beauty is truly everywhere...

Life is full of challenges for young people experiencing mental health issues. Facing and overcoming those challenges requires extraordinary determination and resilience when you are a young person who has experienced trauma and lived in Out of Home Care. Two steps forward is often followed by one step back. And so it was for one young woman who was studying and working in the beauty industry – her dream career.

She was doing a great job and everyone around her was so proud of her hard work and professionalism.

Then all beauty salons were closed because of the COVID-19 pandemic. The Manager of Continued Care at Junction Support Services, Annie Shirley, became a client and had eyelash extensions applied.

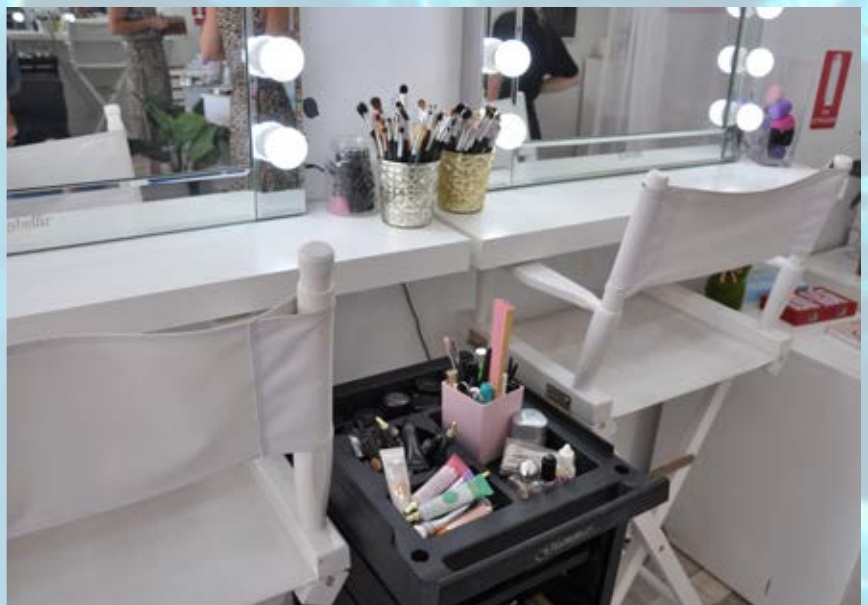
"I was overwhelmed with her professionalism, respect and care for me as a client," Annie says.

"She was kind and genuine in her approach as a beautician and outstanding in her application and attention to detail. I am proud of her resilience and motivation to obtain a career."

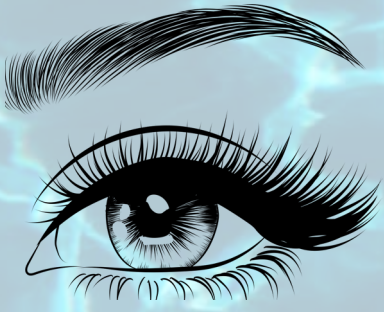
Our message to her, and all young people, is we believe in you. Just keep going.



One by one... Each eyelash extension is applied individually.



A beautician's equipment waits ready for the next client.



As long as we look hard enough

D
D
P

M
a
y

2
0
2
0



Delicate work... The young beautician shows great care and concentration.



Inside the salon and Annie Shirley, from Junction Support Services, after eyelash extensions.